



76 Ruislip Road, Greenford, UB6 9QJ

£485,000

EVANS
& COMPANY

Ruislip Road Greenford

- 3 Bedroom House
- Double Glazed
- 2 Reception Rooms
- Private Rear Garden
- Vacant Possession

Evans & Company are pleased to present this 3 bedroom house in need of modernisation throughout, the property is located within walking distance of Greenford Broadway shops and transport links.

Porch

Double glazed windows, door to

Entrance Hall

Stairs to first floor, doors to

Lounge

12'2" x 11'5" (3.71 x 3.48)

Double glazed window to front, power points

Dinning Room

12'8" x 9'10" (3.88 x 3.00)

Double glazed doors to rear, power points



Kitchen

9'0" x 6'11" (2.75 x 2.12)

Eye and base level storage units, single drainer sink unit with taps, double glazed door to rear

Bedroom 1

12'2" x 11'5" (3.71 x 3.48)

Double glazed windows to front, power points

Bedroom 2

12'0" x 11'5" (3.68 x 3.48)

Double glazed windows to rear, fitted storage, power points

Bedroom 3

10'4" x 6'11" (3.17 x 2.11)

Double glazed windows to front, power points

Bathroom

Enclosed bath panel with, low level WC, sink unit with mixer taps, double glazed windows to rear

Outside

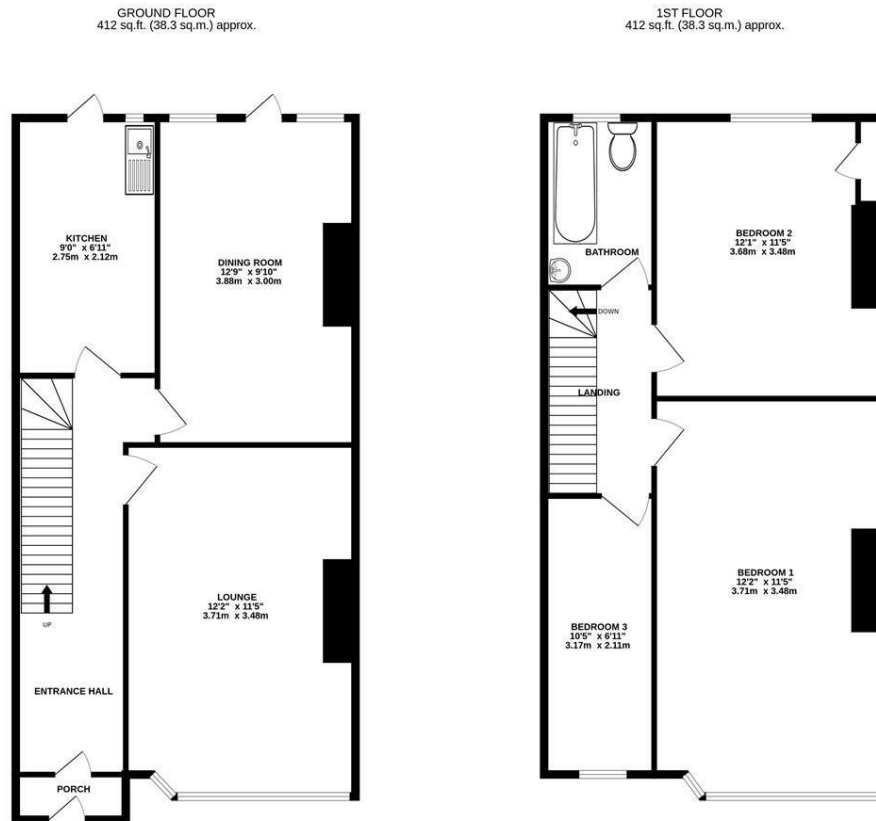
Front

Enclose garden area, door to

Rear

Paved patio leading to lawn area, storage shed

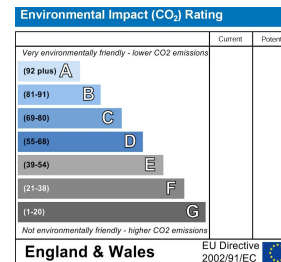
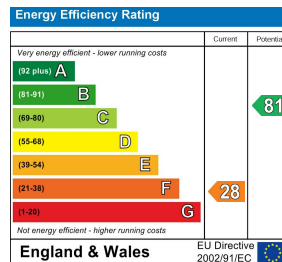




TOTAL FLOOR AREA: 825 sq.ft. (76.6 sq.m.) approx.

Whilst every attempt has been made to ensure the accuracy of the floorplan contained here, measurements of doors, windows, rooms and any other items are approximate and no responsibility is taken for any error, omission or mis-statement. This plan is for illustrative purposes only and should be used as such by any prospective purchaser. The services, systems and appliances shown have not been tested and no guarantee as to their operability or efficiency can be given.

Made with Metropix ©2025



55 The Broadway, Greenford, Middlesex, UB6 9PN
 020 8575 7722
 enquiries@evanson-line.com
 www.altosoftware.co.uk